

# INHERENTLY HEAT & FLAME RETARDANT

INHERENT FIRE RETARDANT COVERALL

**RW**  
**RETTET WORKWEAR**  
FLAME RETARDANT WORKWEARS

**WORK COVERALL**  
Article No.: RWIFRHV



## STYLE & DESIGN

- 7 Pockets Design - Two chest pockets, one with flap & pencil slot on the left / Two side pockets / Two rear pockets, one with flap on the right / Tool pocket on the right leg
- Two way heavy duty metallic zipper, snap button and storm flap closure
- Fully double stitched and bar tacked stress points with FR thread
- Action back allowing maximum body movement
- Full sleeves with (ADDITIONAL)adjustable cuffs
- Permanent sewn crease line
- Snap button neck closure with hanging hook on collar
- Concealed elastic waist on backside
- Colour Fastness 4-5 and Easy care
- All metal parts are fully concealed

## COMPOSITION

- Fabric : RWW®  
Inherent Flame Retardant and Anti-static (Aramid/Modacrylic/Anti-Static)
- Fabric weight : 180 GSM or 5.3 OZ

## APPLICATIONS

The selection of high quality Inherent Flame Retardant RWW® fabric and the durable garment construction makes it ideal for industrial, oil and gas, petrochemical, construction, maintenance, manufacturing, welding & metal industries, energy & power, shipping industries, chemical industries and electrical industries.



EN ISO 11612  
A1, A2, B1, C1, F1



EN 1149-5



IEC 61482-1-2  
Class 1



NFPA  
2112  
HRC1



NFPA  
70E  
HRC1



Inherent FR



Color  
Fastness



Breathable



No Cotton  
Fibers



# INHERENTLY HEAT & FLAME RETARDANT

INHERENT FIRE RETARDANT COVERALL



**WORK COVERALL**  
Article No.: RWIFRHV

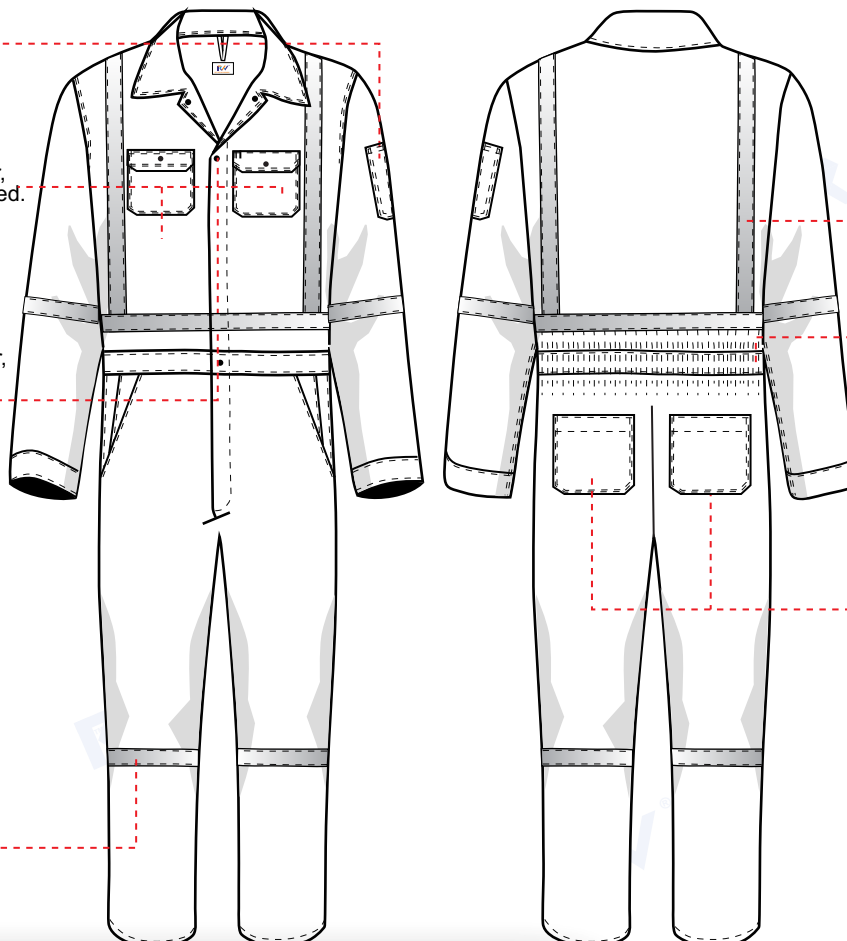
## DESIGN SPECIFICATIONS

Pen pocket with 2 slot

Two chest pockets  
Left chest pocket with flap cover, pencil slot and snap button locked.  
Right chest pocket with snap button lock without flap cover.

Two way heavy duty YKK zipper, stormflap & concealed metallic snap button closure

1 inch FR reflective tape

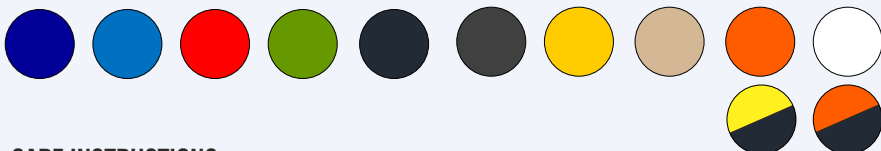


1 inch reflective tape

Elastic waist on the back

rear pockets  
Right pocket with flap cover & snap button lock.  
Left pocket with snap button lock without flap cover.

### COLOURS



### CARE INSTRUCTIONS:

Protective Garments Should Be Cleaned Regularly, as Per Recommended Instructions. Always Wash Your Flame Retardant Ppe Separately To Avoid Some Migration Of Flammable Loose Fibers Or Components. After Cleaning The Garment, Please Inspect Before Re-use.

### WASH CARE INSTRUCTIONS

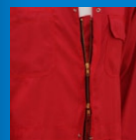
Wash At 60°C, Do Not Use Detergents Containing Phosphate Or Chlorine. Tumble Dry Allowed. Use Dry Cleaning Agent Other Than Trichloroethylene. Iron At Medium Setting. Do Not Bleach, Do Not Use Acids When Rinsing.



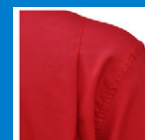
### SIZE CHART

S	M	L	XL	2XL	3XL	4XL	5XL	6XL
36-38	40-42	44-46	48-50	52-54	56-58	60-62	64-66	68-70

### COMPONENTS



Two way heavy duty metallic zipper, snap button & storm flap closure



Action back allowing maximum body movement



Concealed elastic waist on backside.

